

SCOUT

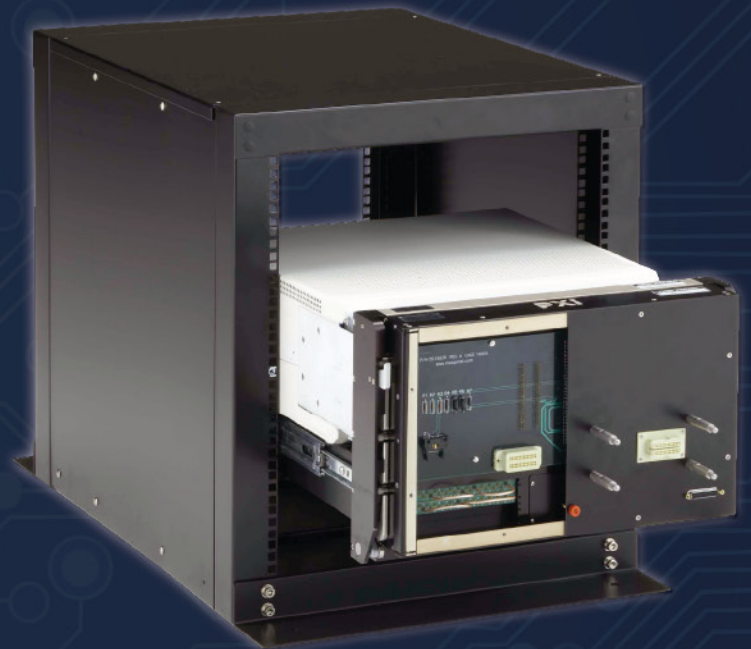
Next Generation Mass Interconnect

Specifically designed to deliver the full performance of the PXI platform.

NEW!
Wireless ITAs



28 Slot SCOUT Interface mounted on NI PXI-1045 Chassis
(shown with Interchangeable Test Adapter unmounted)



28 Slot SCOUT Interface mounted on NI PXI-1045 Chassis
(shown with Interchangeable Test Adapter mounted)

● Reduce Integration Time
Integrate in hours, not days or weeks

● Improve Signal Integrity
PCB or flex-circuits replace cabling

● Enhance Performance
Add active circuitry to DAK PCBs

● Lowest Cost of Ownership
Simplified maintenance, upgrade, etc.

● Pre Engineered Solutions
Reduce engineering costs and time

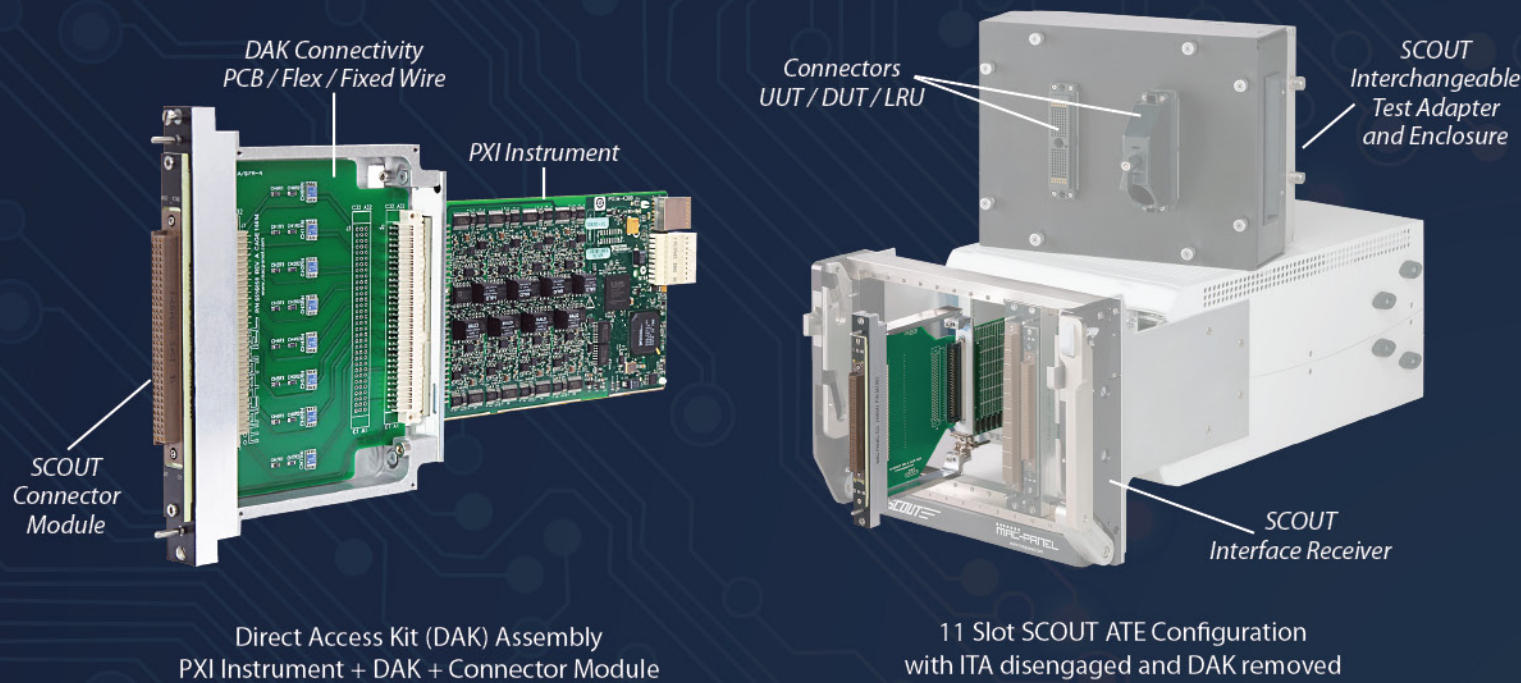
PXI

MAC-PANEL
Interconnect Solutions & Services

PXI

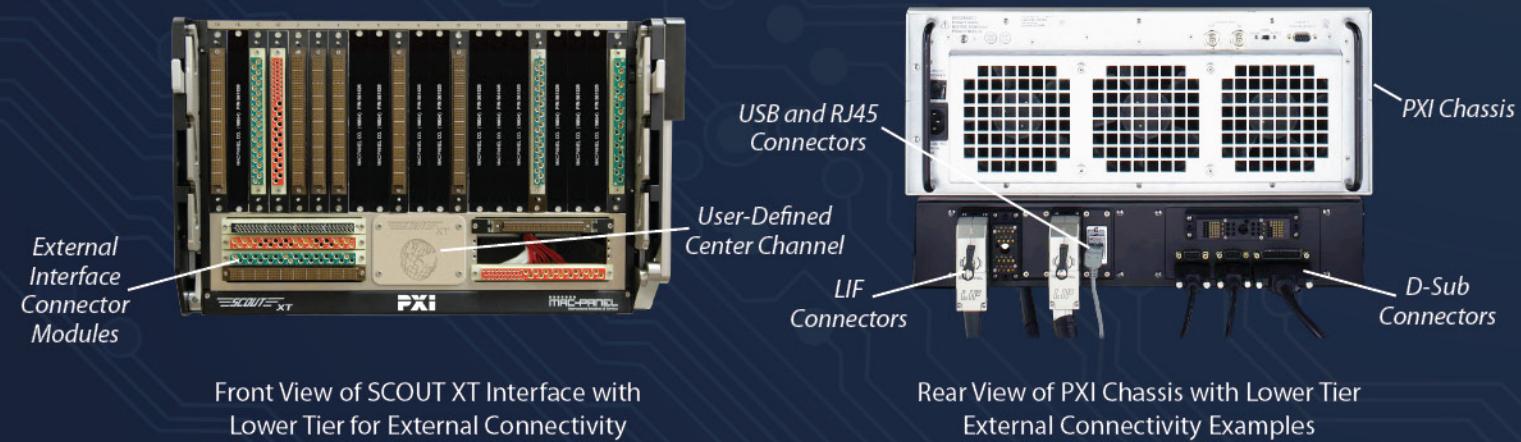
Superior Performance

SCOUT is an innovative pull-thru interconnect solution designed to connect PXI instrumentation to a robust, high life cycle connector interface. SCOUT utilizes Direct Access Kits (DAKs) to provide fully enclosed PCB or fixed-wire connectivity, enabling system designers to eliminate conventional cabling that often plagues traditional ATE. The result is increased performance with a far higher degree of system stability and up-time.



Cross Platform Support

SCOUT provides an ideal solution for PXI based ATE that also require assets from other platforms. All SCOUT variants include **External Wiring Slots** that easily accommodate I/O from instrumentation external to the chassis. SCOUT XT includes an additional lower tier with 8 connector module locations **PLUS** a custom center channel for additional user defined I/O.

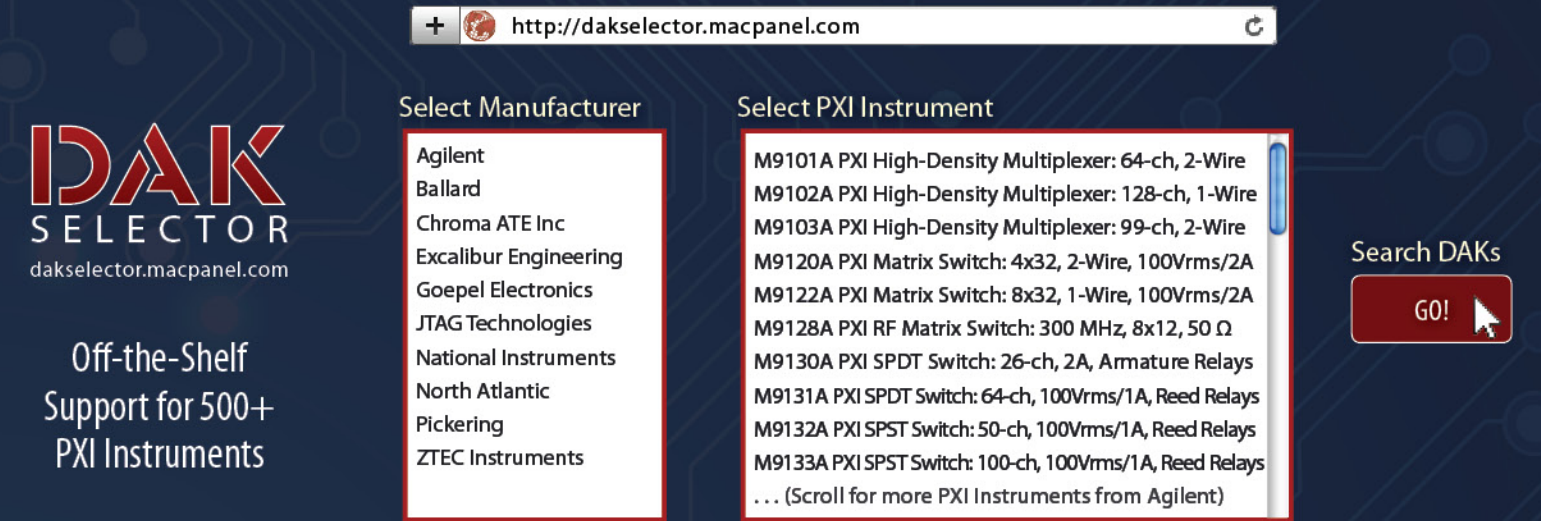


Unprecedented Modularity

Simply remove a DAK Assembly and replace it with another OR swap a DAK Assembly between multiple systems. In both cases, the process is typically completed in a matter of minutes with no adverse impact on the ATE – **the system capacitance signature remains unaffected**. The opposite is true of conventional cable based ATE solutions where instrument removal can take hours and typically requires a system calibration upon completion.

Unparalleled Support for PXI

Pre-engineered DAK solutions are currently available for over 500 PXI Instruments. Using the DAK Selector utility, simply specify your PXI Instrument for a complete listing of all DAKs compatible with your instrument.

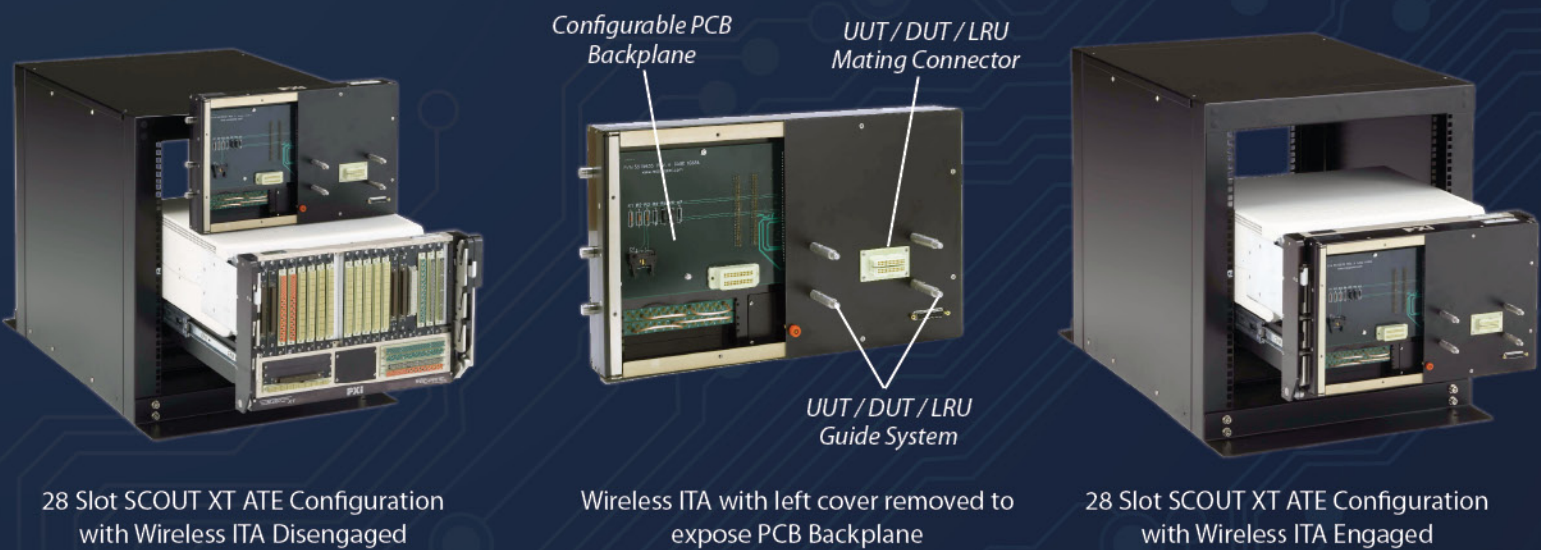


Lowest Cost of Ownership

SCOUT systems are initially configured at a price comparable to traditional cable based solutions, **BUT** the cost of integrating and maintaining a SCOUT system is **ALWAYS** much lower. Complex PXI ATE can be integrated in a matter of hours where conventional solutions can take weeks. Furthermore, all DAK modules are COTS, saving costly engineering and documentation time - **these costs savings will continue throughout the life of the system.**

Wireless Test Adapters - The Ultimate Turn Key Solution - NEW!

Pair a wireless Test Adapter with a SCOUT interface utilizing PCB DAKs to create an ideal wireless interconnection solution between your PXI instrumentation and the UUT / DUT / LRU.



Wireless Test Adapters feature an integral PCB backplane providing wireless connectivity between the SCOUT interface and the UUT / DUT / LRU. This configurable backplane provides I/O signal mapping between the appropriate module/instrument resource pairs through matrix switching to the prescribed contacts of the UUT connector. On multiple projects where a SCOUT Interface + Wireless ITA configuration was deployed, **95% of discrete wiring was successfully eliminated from the ITA.**

Exceptional Configurability

SCOUT Interfaces are available for benchtop or rack and stack PXI ATE configurations and are compatible with a range of high performance connector modules and contact sets. Find a complete listing of all SCOUT components online at macpanel.com.

11 Slot Interface



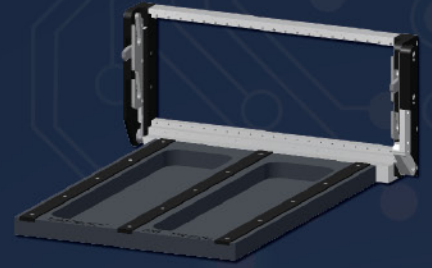
- ✓ Fits Standard 8 Slot PXI Chassis
- ✓ Ideal for Benchtop Applications
- ✓ Up to 2,200 I/O Points

21 Slot Interface



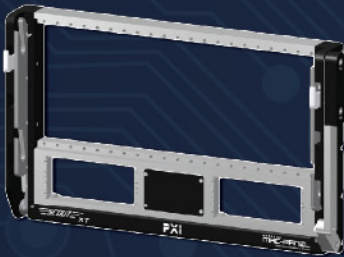
- ✓ Fits Standard 18 Slot PXI Chassis
- ✓ Benchtop or Rack Mount Applications
- ✓ Up to 4,200 I/O Points

21 Slot Interface with Integral Table



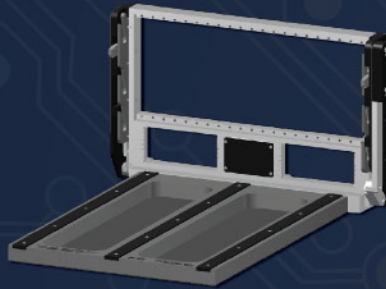
- ✓ Support ITAs while Disengaged
- ✓ Promotes Proper ITA Alignment
- ✓ Engage / Disengage Directly from Table

28 Slot XT Interface



- ✓ Fits 18 Slot PXI Chassis Plus XT Lower Tier
- ✓ Access Non-PXI Instrumentation
- ✓ Up to 5,800 I/O Points

28 Slot XT Interface With Integral Table



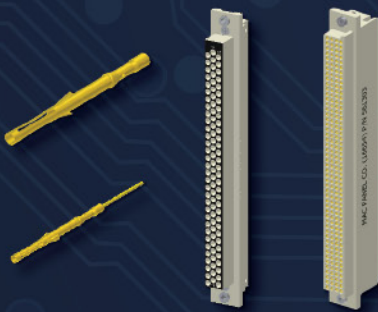
- ✓ Support ITAs while Disengaged
- ✓ Promotes Proper ITA Alignment
- ✓ Engage / Disengage Directly from Table

42 Slot Dual Tier Interface



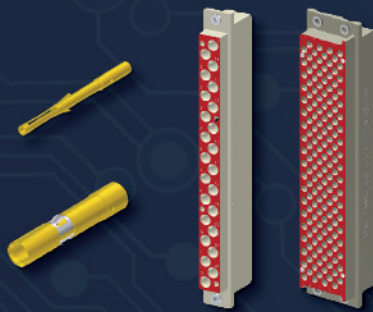
- ✓ Supports Dual PXI 18-Slot Chassis'
- ✓ Easy Access via Slide Shelves
- ✓ Up to 8,400 I/O Points

Signal Components



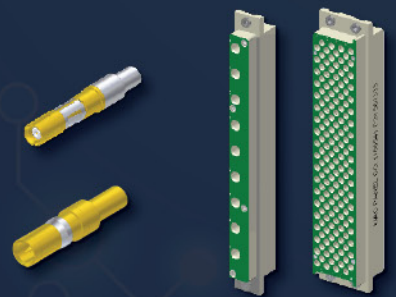
- ✓ Contacts Support up to 5 Amps Max
- ✓ Modules Range from 96 to 200 Positions/Slot

Power Components



- ✓ Contacts Support up to 50 Amps Max
- ✓ Modules Range from 24 to 152 Positions/Slot

Coax Components



- ✓ Contacts Support up to DC-40 GHz
- ✓ Modules Range from 6 to 152 Positions/Slot

Go to macpanel.com/enhance

Learn more about how SCOUT + Direct Access can enhance and differentiate your PXI ATE Instrumentation

