

6TL19

HALF RACK BASE TEST PLATFORM



*fast*ATE[®] Technology platforms
are the ideal base
to develop ATE solutions

6TL provides the base, the
integrator provides the ATE

The 6TL-19 is the perfect base for the integration of Automatic Test Equipment to cover the low to mid, high-mix electronic productions.

Following the FastATE technology, the resulting integrated test system will be simple, easy to maintain and cost effective.

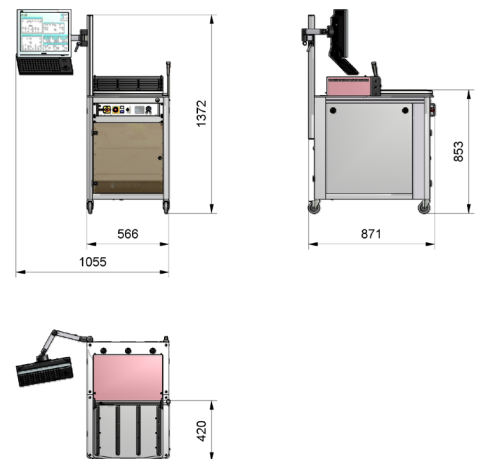
Managers involved in Electronics Design&Production need to speed up launch and new products introduction cycle times; The test equipment to guarantee the quality of the deliveries is a must. At this point, the 6TL-19 will help, since all the basics needed when thinking about a reliable test production tool are already included, with the corresponding time&money savings. The base platform features:

- The 6TL MMI (Platform Manager), to control the power-up and down operation of the Test System, as well as the temperature and Safety aspects. A UPS will protect the instrumentation.
- Different options as Platform Controller: either an Industrial PC or an embedded PC in the PXI chassis.
- A Mass Interconnect solution from Virginia Panel (G12), allowing the reliable and easy exchangeability of test fixtures (High mix: test different products with the same test platform).
- Easy integration with NI LabVIEW and PXI instruments, giving as a result, the highest level of modularity and scalability for your top-class production testing tool.

- FastATE technology: Modular, scalable and top flexible approach; Minimum wiring and easy maintenance; LabVIEW drivers.
- Mid sized - High mixed production batches
- Ideal for ISP, ICT and Functional Test
- PXI chassis direct integration
- 12-slot Virginia Panel receiver
- Platform Manager (Power, Temperature and Safety), 6TL module P/N H73000301 with EPO safety function included, and possibility to include up to 4 additional functions.
- UPS, for platform controlled power up/down and instrument asset protection
- Keyboard with trackball and TFT
- 7U 19" free rack space for integration of third party equipment
- Small footprint
- CE compliant, ESD safe
- Ready to integrate options available: Phi6 Operator Interface; Light tower; Barcode reader kit; Printer kit; auxiliary side table; Air inlet kit



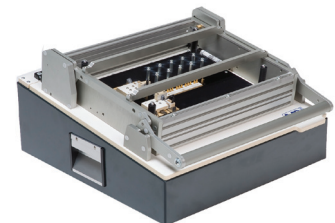
Platform Operation	Off-Line
Type	Half 19" rack with wheels
Wxdxh	566 x 830 x XXXmm
Weight	130 Kg
Power requirements	220V AC / 50Hz, <2KW
UPS	1000VA
Press unit	Not included (every Fixture Kit will include the press unit)
Fixturing type	Manual Fixture Kits with G12 ITA interface; Baseband or HF
Built in 19" rack free space	7U 830mm depth
Mass interconnect solution	12 slots. Virginia Panel G12
Platform Manager	6TL module P/N H73000301 (Power, Temperature & Safety Management)
Platform Controller	IPC or PXI embedded.
Operator interface	17" VGA Monitor on rear TFT arm.
Keyboard + mouse	Yes, Keyboard EU layout with trackball kit in lockable front drawer.



The 6TL19 is ideal for	ISP	Combine with YAV90ISP and Algocraft WriteNow Programmer
	ICT	Combine with YAV90Q06 and Digitaltest MTS-30
	Boundary Scan	Combine with YAV90JTAG, YAV90JTAH and JTAG Technologies
	Functional Test	Combine with YAV90CIN, YAV904X8 and PXI Chassis (6TL-08 Plus)
In the following environments		Production, from Low to Mid sized production batches, High Mix.

As any *fastATE* base platform, the 6TL19 features:

- 6TL **YAV** Modules compatibility.
- PXI chassis direct integration
- Reliable mass interconnect interface (VPC 90 series compatible)
- Short delivery time



	Basic	Advanced	Plus	Most commonly used Options (Ready to install)	
Controller	Not included	IPC	PXI embedded		
		Industrial 4U System Intel Core 2 Duo. Win XP. <ul style="list-style-type: none"> • 6 PCI; 1 PCIe x16 • 5 COM ports • 1 RS485 port • 6 USB ports • 2 Gb Ethernet ports 	NI PXIe-8108 Core 2 Duo 2.53 GHz Controller, Win 7.	MMS9540	Bar code reader Kit
				H710022A1	Label Printer Kit
				8710032T1	Side table 350x560mm
				H78001000	Light tower (3 colors), CAN
				H71002181	Air Inlet Kit
				H71002190	Adjust. side support for TFT
				H71006600	Adjust. working surface kit
Platform manager	H73000301	H73000301	H73000301		
PXI Chassis	No	No	NI PXIe-1071, 4-Slot 3U PXI Express Chassis		
PN	H71001900	H7100190A	H7100190P		